

PLAN OF SUBDIVISION  
of part of  
**LOT 15, CONCESSION 3**  
(GEOGRAPHIC TOWNSHIP OF WEST MISSOURI)  
in the  
**MUNICIPALITY OF THAMES CENTRE**  
COUNTY OF MIDDLESEX  
Scale 1 : 750  
MTE OLS LTD.



METRIC: DISTANCES AND COORDINATES SHOWN ON THIS PLAN ARE IN METRES AND CAN BE CONVERTED TO FEET BY DIVIDING BY 0.3048

**NOTES**

- SIB DENOTES STANDARD IRON BAR.
- SSIB SHORT STANDARD IRON BAR.
- IB IRON BAR.
- ISB FOUND IRON BAR.
- CC CUT CROSS.
- WT WITNESS.
- (SU) SOURCE UNKNOWN.
- (HR) HOLSTEAD & REDMOND LIMITED, O.L.S.'s.
- MONUMENT FOUND.
- MONUMENT SET.
- P PLAN 33M-717.
- P1 PLAN 33R-19300.
- P2 PLAN 33R-19452.
- BC BEGINNING OF CURVE.
- EC END OF CURVE.
- PRC POINT OF REVERSE CURVE.
- P.I. POINT OF INTERSECTION.

BEARINGS AND DISTANCES ON THIS PLAN AGREE WITH THOSE SHOWN ON PLAN 33R-20518 UNLESS SHOWN OTHERWISE

**MONUMENT NOTE**

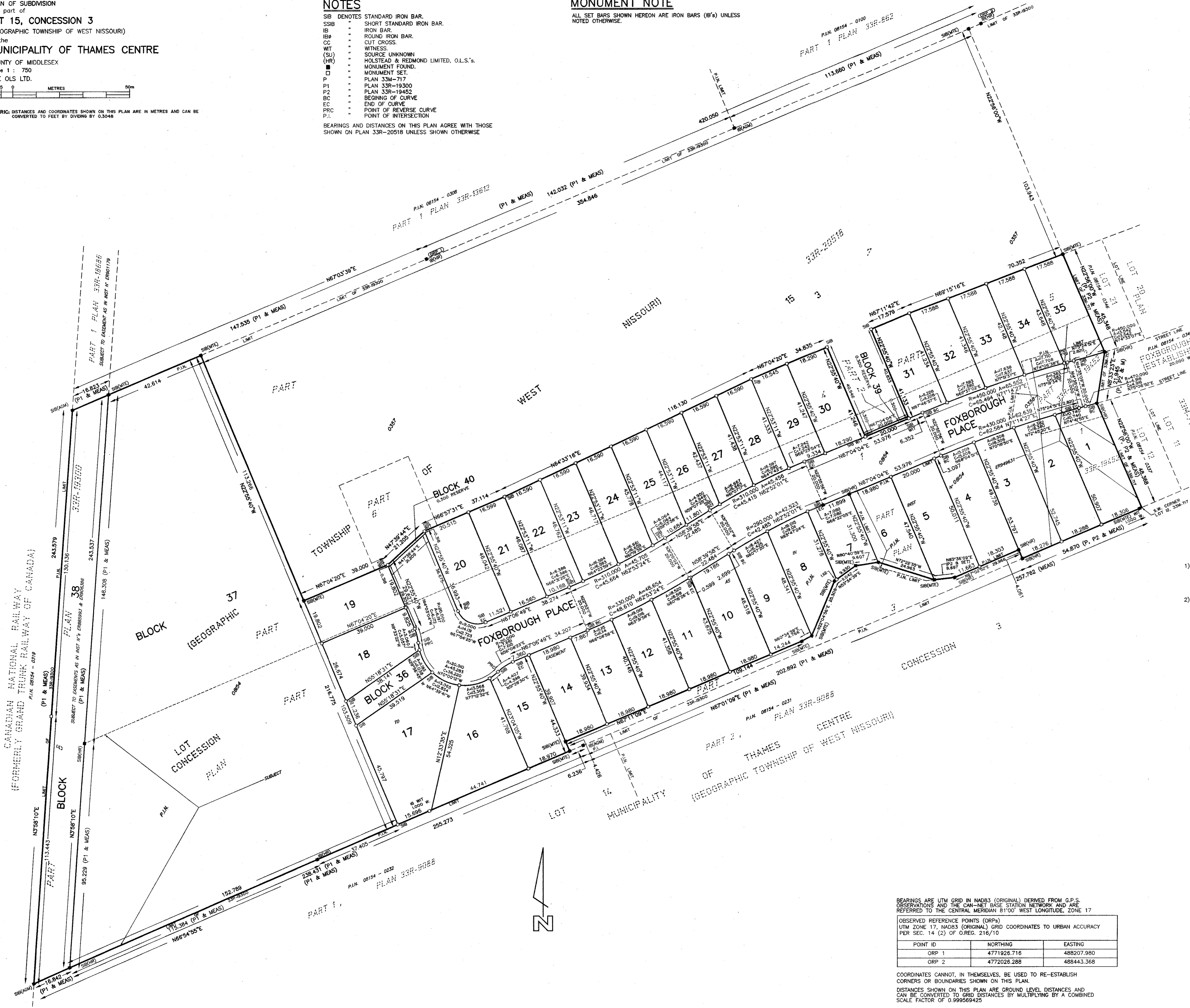
ALL SET BARS SHOWN HEREON ARE IRON BARS (IB'S) UNLESS NOTED OTHERWISE.

PLAN 33M-777

I CERTIFY THAT THIS PLAN IS REGISTERED IN THE LAND REGISTRY OFFICE FOR THE LAND TITLES DIVISION OF MIDDLESEX AT 10:15 O'CLOCK ON THE 14th DAY OF February 2020, AND ENTERED IN THE PARCEL REGISTER FOR P.I.N. 08154-0357 AND P.I.N. 08154-0358 AND THE REQUIRED CONSENTS ARE REGISTERED AS PLAN DOCUMENT No. EA 1381042

**L. VAN BOMMEL**  
REPRESENTATIVE FOR THE LAND REGISTRAR

THIS PLAN COMPRISES PART OF P.I.N. 08154 - 0357 & PART OF P.I.N. 08154 - 0358 ALL OF LOTS 1 TO 18 (BOTH INCLUSIVE), PART OF LOTS 19 TO 35 (BOTH INCLUSIVE) ALL OF BLOCK 36 & 39, PART OF BLOCK 37 AND PART OF FOXBOROUGH PLACE ARE SUBJECT TO EASEMENTS AS IN INST N° ER949631 ALL OF BLOCK 38 IS SUBJECT TO EASEMENTS AS IN INST N° ER85993 & ER906396



**OWNER'S CERTIFICATE**

THIS IS TO CERTIFY THAT:  
1) LOTS 1 TO 35, (BOTH INCLUSIVE), BLOCKS 36, 37 & 38, THE RESERVES NAMELY BLOCKS 39 & 40 AND THE STREET NAMELY FOXBOROUGH PLACE HAVE BEEN LAID OUT IN ACCORDANCE WITH MY INSTRUCTIONS.

2) THE STREET IS DEDICATED TO THE CORPORATION OF THE MUNICIPALITY OF THAMES CENTRE AS PUBLIC HIGHWAY.  
NORQUAY FOXBOROUGH LAND CORP.

Feb 6, 2020  
*[Signature]*  
CRAB LINTON - PRESIDENT  
I HAVE THE AUTHORITY TO BIND THE CORPORATION

**SURVEYOR'S CERTIFICATE**

I CERTIFY THAT:  
(1) THIS SURVEY AND PLAN ARE CORRECT AND IN ACCORDANCE WITH THE SURVEYS ACT, THE SURVEYORS ACT AND THE LAND TITLES ACT AND THE REGULATIONS MADE UNDER THEM.  
(2) THE SURVEY WAS COMPLETED ON THE 23rd DAY OF AUGUST, 2019

FEBRUARY 6, 2020  
*[Signature]*  
P.R. LEVAC  
ONTARIO LAND SURVEYOR

**APPROVAL AUTHORITY CERTIFICATE**

THIS FINAL PLAN OF SUBDIVISION IS APPROVED BY THE COUNTY OF MIDDLESEX UNDER SECTION 51(5B) OF THE PLANNING ACT, R.S.O. 1990. ON THIS 10 DAY OF February 2020.

*[Signature]*  
DIRECTOR OF PLANNING & ECONOMIC DEVELOPMENT  
COUNTY OF MIDDLESEX

BEARINGS ARE UTM GRID IN NAD83 (ORIGINAL) DERIVED FROM G.P.S. OBSERVATIONS AND THE CAN-NET EASE STATION NETWORK AND ARE REFERRED TO THE CENTRAL MERIDIAN 81°00' WEST LONGITUDE, ZONE 17

OBSERVED REFERENCE POINTS (ORPs)  
UTM ZONE 17, NAD83 (ORIGINAL) GRID COORDINATES TO URBAN ACCURACY PER SEC. 14 (2) OF OREG. 216/10

POINT ID	NORTHING	EASTING
ORP 1	4771926.716	488207.980
ORP 2	4772026.288	488443.368

COORDINATES CANNOT, IN THEMSELVES, BE USED TO RE-ESTABLISH CORNERS OR BOUNDARIES SHOWN ON THIS PLAN.  
DISTANCES SHOWN ON THIS PLAN ARE GROUND LEVEL DISTANCES AND CAN BE CONVERTED TO GRID DISTANCES BY MULTIPLYING BY A COMBINED SCALE FACTOR OF 0.999569425

**MTE** MTE ONTARIO LAND SURVEYORS LTD.  
123 ST. GEORGE STREET  
LONDON, ONTARIO, N6A 3A1  
TEL: 519-204-6510

Case File:	NR/DB	Checked By:	EV/PRL	COORD:
Surveyed By:	NR/DB	Checked By:	EV/PRL	MTE File No.: 43609-100
Drawn By:	FS	Date:	20/02/06	PR File No.: