

I CERTIFY THAT THIS PLAN IS REGISTERED IN THE LAND REGISTRY OFFICE FOR THE LAND TITLES DIVISION OF MIDDLESEX AT 1 O'CLOCK ON THE DAY OF 2017, AND ENTERED IN THE PARCEL REGISTER FOR P.I.N. 08154-0320 AND THE REQUIRED CONSENTS ARE REGISTERED AS PLAN DOCUMENT No. _____

REPRESENTATIVE FOR THE LAND REGISTRAR

THIS PLAN IS COMPRISED OF PART OF P.I.N. 08154 - 0320 LOTS 1 TO 12, PART OF LOTS 13 TO 21 AND PART OF FOXBOROUGH PLACE AND ALL OF BLOCK 22 ARE SUBJECT TO AN EASEMENT AS IN INST N° ER949631 PART OF FOXBOROUGH PLACE IS SUBJECT TO RIGHT-OF-WAYS AS IN INST N° LT496468 AND LT503036

PLAN OF SUBDIVISION of part of LOT 15, CONCESSION 3 (GEOGRAPHIC TOWNSHIP OF WEST MISSOURI) in the MUNICIPALITY OF THAMES CENTRE COUNTY OF MIDDLESEX

Scale 1 : 750 HOLSTEAD & REDMOND LIMITED

METRIC: DISTANCES AND COORDINATES SHOWN ON THIS PLAN ARE IN METRES AND CAN BE CONVERTED TO FEET BY DIVIDING BY 0.3048

NOTES

- SIB DENOTES STANDARD IRON BAR. SSIB - SHORT STANDARD IRON BAR. IB - IRON BAR. IB# - ROUND IRON BAR. CC - CUT CROSS. WIT - WITNESS. (SU) - SOURCE UNKNOWN. (HR) - HOLSTEAD & REDMOND LIMITED, O.L.S.'s. MONUMENT FOUND. MONUMENT SET. S/T - SUBJECT TO. P.I. - POINT OF INTERSECTION. R.O.W. - RIGHT-OF-WAY. M - MEASURE. P1 - PLAN 33R-13612. P2 - PLAN 33R-18145. P3 - PLAN 33R-1317. P4 - PLAN 33R-18898. P5 - PLAN 33R-19452. BC - BEGINNING OF CURVE. EC - END OF CURVE. FD - FOUND.

DISTANCES SHOWN ON CURVES ARE CHORD DISTANCES UNLESS NOTED OTHERWISE

MONUMENT NOTE

ALL SET BARS SHOWN HEREON ARE IRON BARS (IB's) UNLESS NOTED OTHERWISE.

OWNER'S CERTIFICATE

THIS IS TO CERTIFY THAT: I, LOTS 1 TO 12, BOTH INCLUSIVE, THE RESERVE NAMELY BLOCK 22 AND THE STREET NAMELY FOXBOROUGH PLACE HAVE BEEN LAID OUT IN ACCORDANCE WITH MY INSTRUCTIONS.

2) THE STREET IS HEREBY DEDICATED TO THE CORPORATION OF THE MUNICIPALITY OF THAMES CENTRE AS PUBLIC HIGHWAY. NORQUAY FOXBOROUGH LAND CORP.

Michael Howe, President, London, Ontario. I HAVE THE AUTHORITY TO BIND THE CORPORATION

SURVEYOR'S CERTIFICATE

I CERTIFY THAT: (1) THIS SURVEY AND PLAN ARE CORRECT AND IN ACCORDANCE WITH THE SURVEYORS ACT, THE SURVEYORS ACT AND THE LAND TITLES ACT AND THE REGULATIONS MADE UNDER THEM. (2) THE SURVEY WAS COMPLETED ON THE 30th DAY OF MARCH, 2016

FEBRUARY 24, 2017 LONDON, ONTARIO. P.R. LEVAC, ONTARIO LAND SURVEYOR

APPROVAL AUTHORITY CERTIFICATE

THIS FINAL PLAN OF SUBDIVISION IS APPROVED BY THE COUNTY OF MIDDLESEX UNDER SECTION 51(58) OF THE PLANNING ACT, R.S.O. 1990. ON THIS DAY OF 2017.

DIRECTOR OF PLANNING & ECONOMIC DEVELOPMENT COUNTY OF MIDDLESEX



649 COLBORNE STREET London, Ontario N6A 3Z2 phone 519-572-4551 toll free 1-800-265-4945

Table with columns: SURVEYED BY, CHECKED BY, FILE NO., DRAWN BY, DATE, 13-0066B

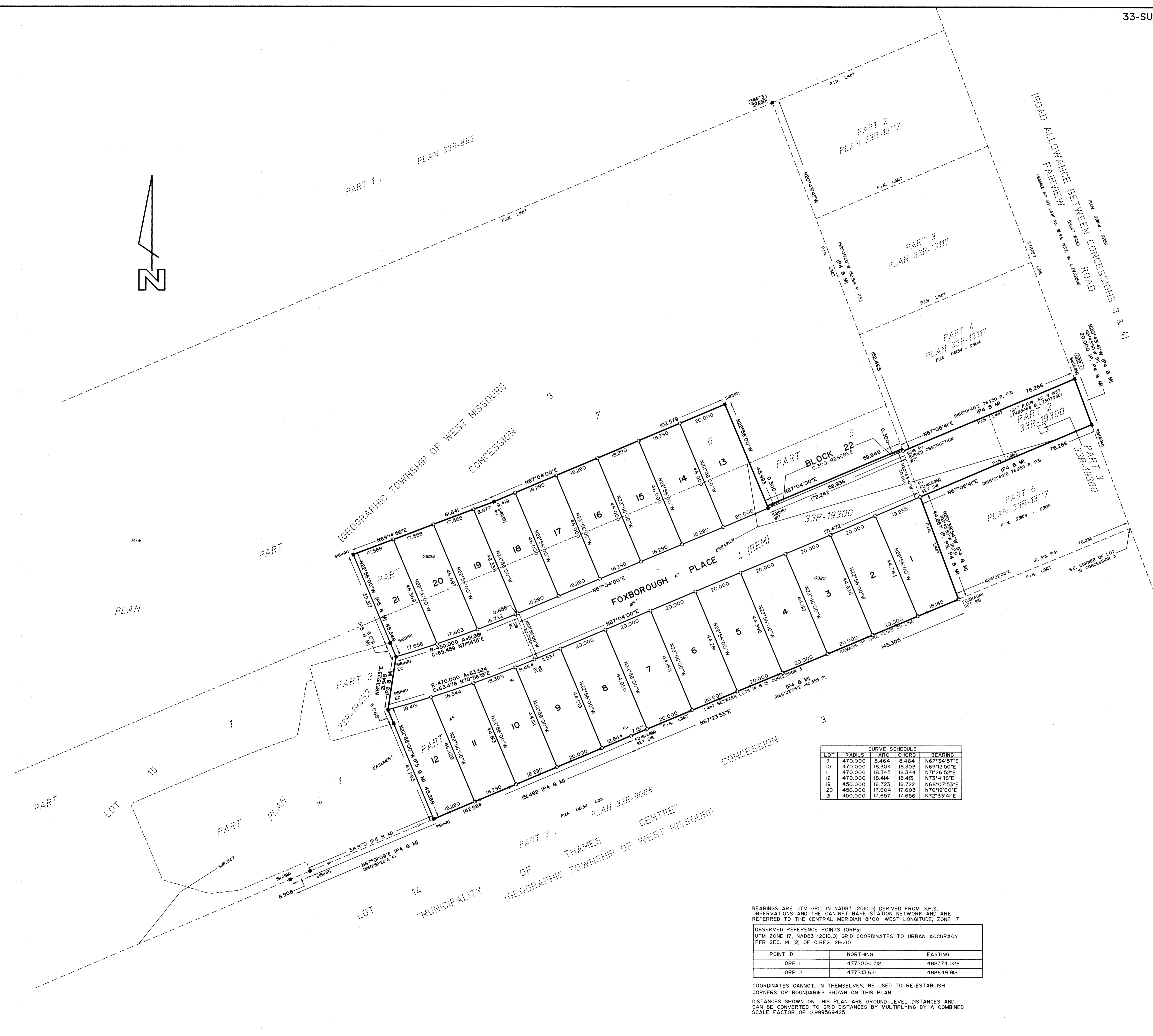


Table with columns: LOT, RADIUS, CURVE SCHEDULE, CHORD, BEARING

Table with columns: POINT ID, NORTHING, EASTING

COORDINATES CANNOT, IN THEMSELVES, BE USED TO RE-ESTABLISH CORNERS OR BOUNDARIES SHOWN ON THIS PLAN. DISTANCES SHOWN ON THIS PLAN ARE GROUND LEVEL DISTANCES AND CAN BE CONVERTED TO GRID DISTANCES BY MULTIPLYING BY A COMBINED SCALE FACTOR OF 0.999569425

