

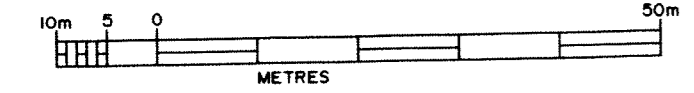
PLAN 33M-629

I CERTIFY THAT THIS PLAN IS REGISTERED IN THE LAND REGISTRY OFFICE FOR THE LAND TITLES DIVISION OF MIDDLESEX AT 10:10 O'CLOCK ON THE 6th DAY OF June 2011 AND ENTERED IN THE REGISTER FOR P.I.N. 09660-0204 AND THE REQUIRED CONSENTS ARE REGISTERED AS PLAN DOCUMENT N° ER765167

P. KENNEDY FISCHER A DEPUTY LAND REGISTRAR

THIS PLAN COMPRISES PART OF P.I.N. 09660-0204 SUBJECT TO EASEMENT AS IN INST. No. ER765167

PLAN OF SUBDIVISION of part of LOT 4, CONCESSION 2 (GEOGRAPHIC TOWNSHIP OF LOBO) and part of PRINCE STREET & QUEEN STREET (BOTH CLOSED BY COURT ORDER INST. No. 756294) and part of LOTS 49, 50, 51 & 52 REGISTERED PLAN No. 55 (C) in the MUNICIPALITY OF MIDDLESEX CENTRE COUNTY OF MIDDLESEX Scale 1:750 DAVID BIANCHI, O.L.S.



METRIC: DISTANCES SHOWN ON THIS PLAN ARE IN METRES AND CAN BE CONVERTED TO FEET BY DIVIDING BY 0.3048

NOTES

- SIB DENOTES STANDARD IRON BAR. IB - IRON BAR. IB# - ROUND IRON BAR. CC - CUT CROSS. WIT - WITNESS. (SU) - SOURCE UNKNOWN. (HR) - HOLSTEAD & REDMOND LIMITED, O.L.S.'s. MONUMENT FOUND. MONUMENT SET. P - PLAN 33R-17169. PI - PLAN 33M-572. WF - WIRE FENCE. W - WIRE FENCE UNLESS NOTED OTHERWISE. M - MEASURED. P.I. - POINT OF INTERSECTION. BC - BEGINNING OF CURVE. EC - END OF CURVE.

DISTANCES SHOWN ON THIS PLAN ARE ADJUSTED GROUND LEVEL DISTANCES AND CAN BE USED TO COMPUTE GRID CO-ORDINATES BY MULTIPLYING THE DISTANCES BY A COMBINED SCALE FACTOR OF 0.999569425. BEARINGS HEREON ARE UTM GRID AND ARE DERIVED FROM HORIZONTAL CONTROL MONUMENT N° 028942017 IN 4766770.654, E 484448.8981 AND HORIZONTAL CONTROL MONUMENT N° 028943043 IN 4750671.637, E 489296.522 AND ARE REFERRED TO THE CENTRAL MERIDIAN 8°W, LONGITUDE, ZONE 17, (NAD 83).

Table with 3 columns: STATION, NORTHING, EASTING. Station 1: 4756956.640, 464274.33. Station 2: 4756642.368, 464104.399.

MONUMENTATION THE CORNERS OF LOTS 1 TO 32 (BOTH INCLUSIVE) AND BLOCKS 33, 34, 35 & 36 ARE MONUMENTED WITH IRON BARS 16cm. x 60cm. LONG UNLESS NOTED OTHERWISE.

OWNER'S CERTIFICATE

THIS IS TO CERTIFY THAT: (1) LOTS 1 TO 32 (BOTH INCLUSIVE), BLOCKS 33 AND 34, THE RESERVES NAMELY BLOCKS 35 AND 36, THE STREETS NAMELY DUKE STREET AND CAVERHILL CRESCENT HAVE BEEN LAID OUT IN ACCORDANCE WITH MY INSTRUCTIONS. (2) THE STREETS ARE HEREBY DEDICATED TO THE CORPORATION OF THE MUNICIPALITY OF MIDDLESEX CENTRE AS PUBLIC HIGHWAY.

PEMIC KOMOKA DEVELOPMENT CORP. DATED THIS 20 DAY OF May 2011

MICHAEL HOWE - PRESIDENT I HAVE THE AUTHORITY TO BIND THE CORPORATION

APPROVAL AUTHORITY CERTIFICATE

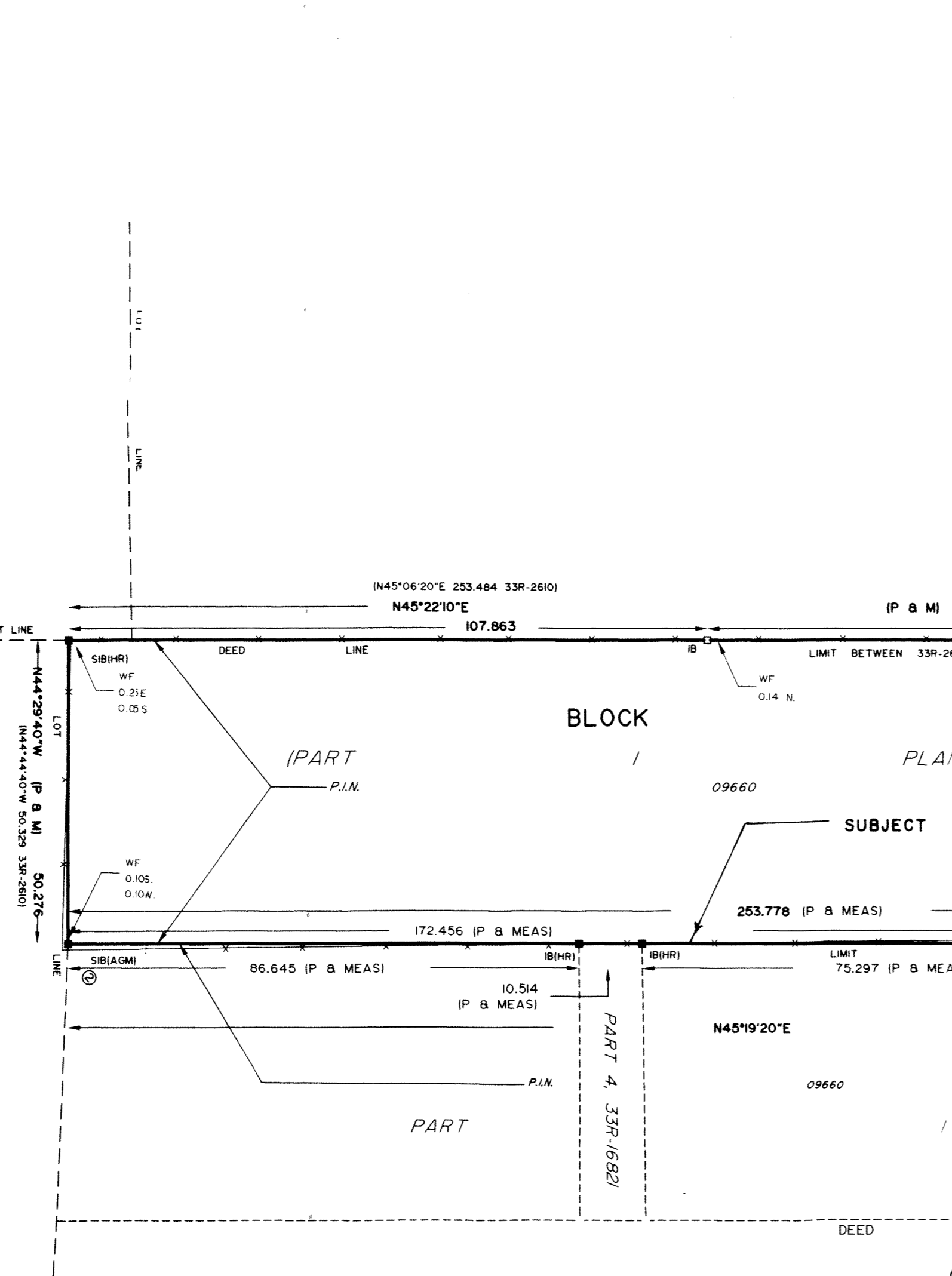
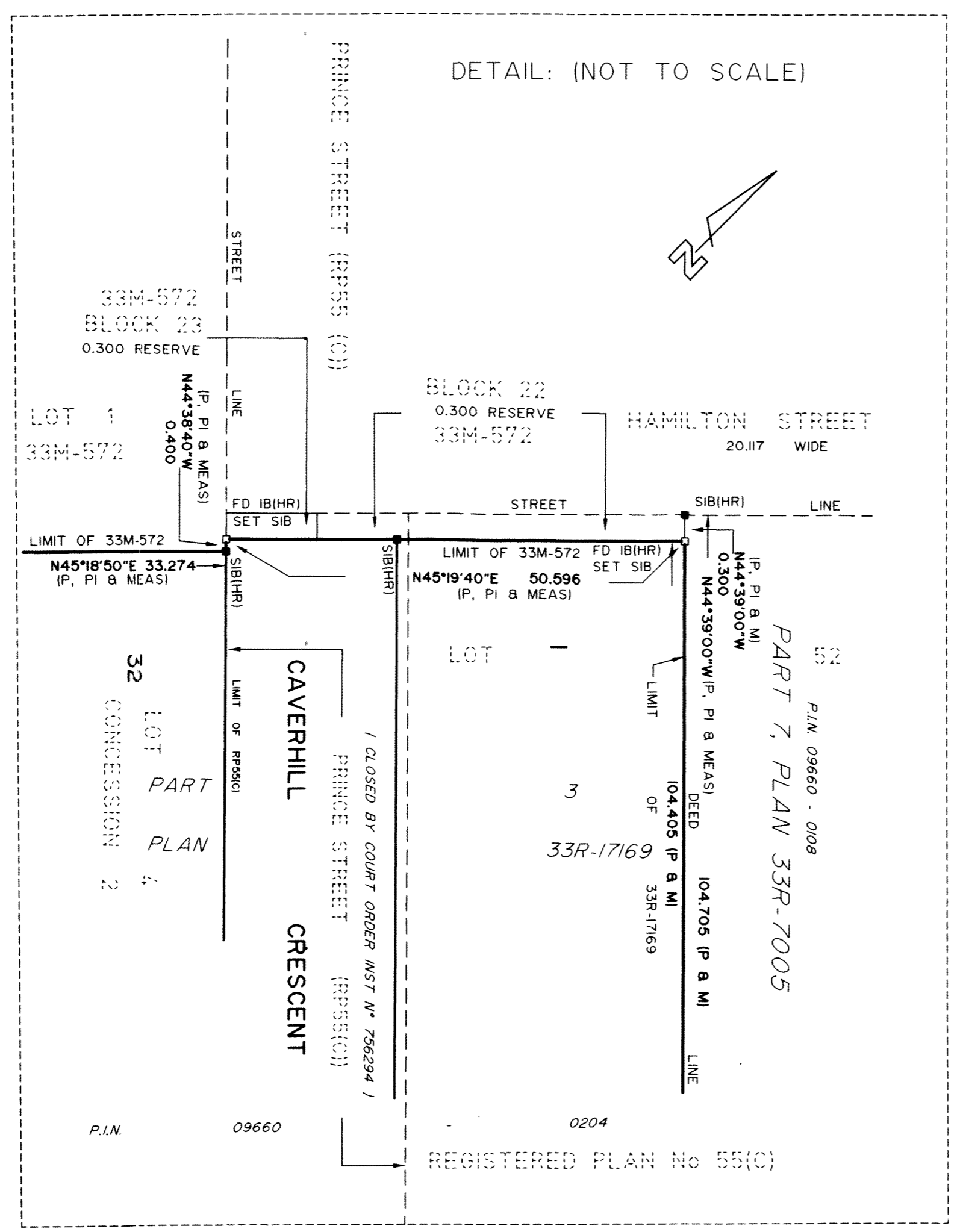
THIS FINAL PLAN OF SUBDIVISION IS APPROVED BY THE COUNTY OF MIDDLESEX UNDER SECTION 51(5) OF THE PLANNING ACT, R.S.O. 1990, ON THIS 02 DAY OF June 2011.

DIRECTOR OF PLANNING & ECONOMIC DEVELOPMENT COUNTY OF MIDDLESEX

SURVEYOR'S CERTIFICATE

I CERTIFY THAT: (1) THIS SURVEY AND PLAN ARE CORRECT AND IN ACCORDANCE WITH THE SURVEY ACT, THE SURVEYORS ACT AND THE LAND TITLES ACT AND THE REGULATIONS MADE UNDER THEM. (2) THE SURVEY WAS COMPLETED ON THE 4th DAY OF MAY, 2011.

MAY 19, 2011 LONDON, ONTARIO. DAVID BIANCHI ONTARIO LAND SURVEYOR



CANADIAN NATIONAL RAILWAY

CURVE SCHEDULE table with columns: LOT/BLK, RADIUS, ARC, CHORD, BEARING. Rows include lots 2, 3, 4, 5, 6, 7, 8, 9, 10, 11, 12, 13, 14, 15, 16, 17, 18, 19, 20, 21, 22, 23, 24, 25, 26, 27, 28, 29, 30, 31, 32, 33.

Logo for Holstead & Redmond Limited, Ontario Land Surveyors, 649 Colborne Street, London, Ontario, N6A 3Z2, phone 519-672-4551, toll free 1-800-265-4945.

Table with 3 columns: SURVEYED BY, CHECKED BY, FILE N°. Values: NR, RHK/GE, ER765167.